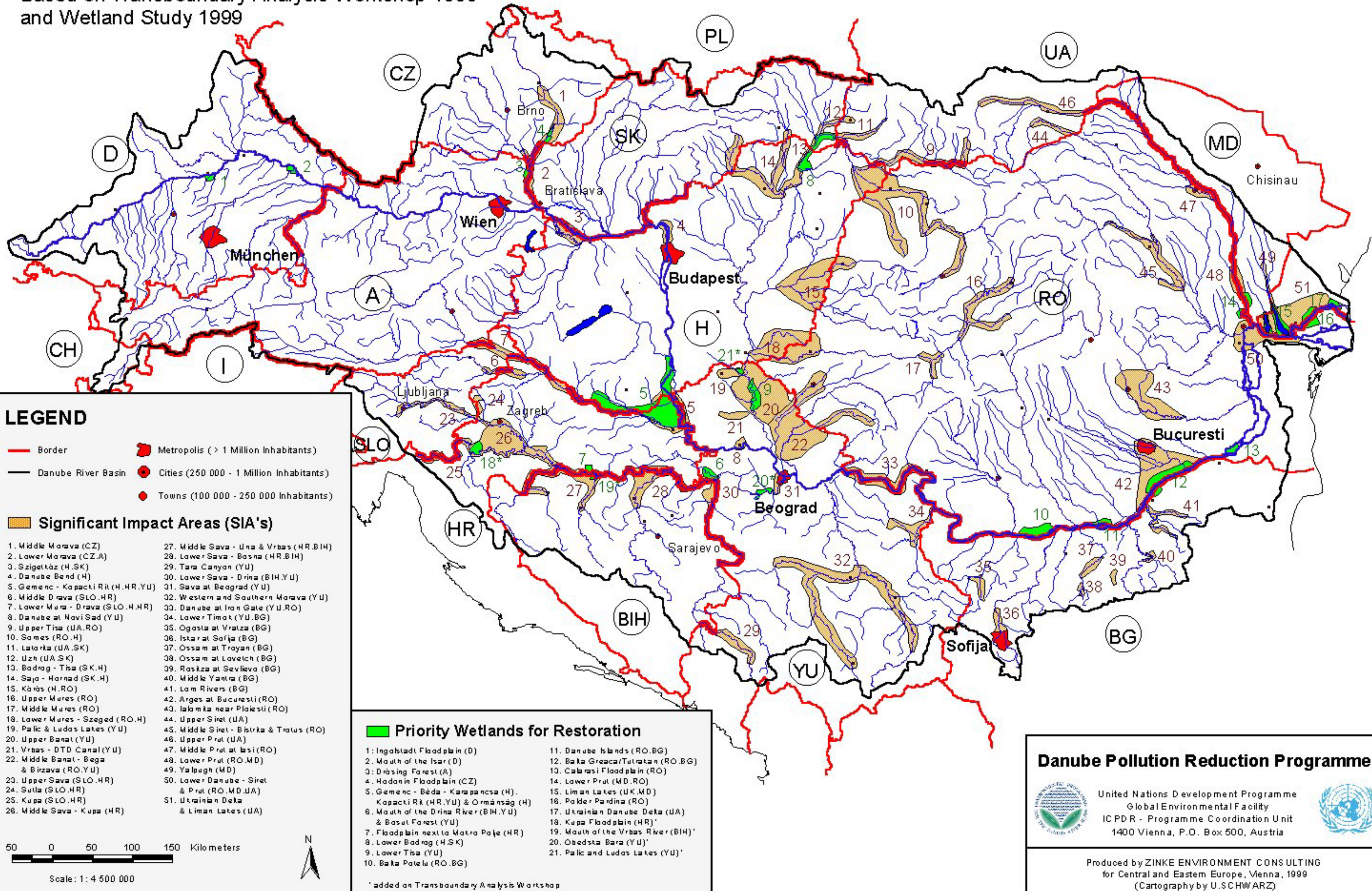


Map 10: Significant Impact Areas and Priority Wetlands for Restoration

Based on Transboundary Analysis Workshop 1999
and Wetland Study 1999



LEGEND

- Border
- Danube River Basin
- Metropolis (> 1 Million Inhabitants)
- Cities (250 000 - 1 Million Inhabitants)
- Towns (100 000 - 250 000 Inhabitants)

Significant Impact Areas (SIA's)

- | | |
|--|--|
| 1. Middle Morava (CZ) | 27. Middle Sava - Una & Vrbas (HR, BIH) |
| 2. Lower Morava (CZ, A) | 28. Lower Sava - Bosna (HR, BIH) |
| 3. Szigetköz (H, SK) | 29. Tara Canyon (YU) |
| 4. Danube Bend (H) | 30. Lower Sava - Drina (BIH, YU) |
| 5. Gemenc - Kapacki Rit (H, HR, YU) | 31. Sava at Beograd (YU) |
| 6. Middle Drava (SLO, HR) | 32. Western and Southern Morava (YU) |
| 7. Lower Mura - Drava (SLO, H, HR) | 33. Danube at Iron Gate (YU, RO) |
| 8. Danube at Novi Sad (YU) | 34. Lower Timok (YU, BG) |
| 9. Upper Tisa (UA, RO) | 35. Ogosta at Vratza (BG) |
| 10. Somes (RO, H) | 36. Istar at Sofija (BG) |
| 11. Latorika (UA, SK) | 37. Ossa at Troyan (BG) |
| 12. Uzh (UA, SK) | 38. Ossa at Lovelch (BG) |
| 13. Badrag - Tisa (S, K, H) | 39. Raskza at Sevlievo (BG) |
| 14. Sajo - Hornad (SK, H) | 40. Middle Yantra (BG) |
| 15. Körös (H, RO) | 41. Lam Rivers (BG) |
| 16. Upper Mures (RO) | 42. Arges at Bucuresti (RO) |
| 17. Middle Mures (RO) | 43. Ialomița near Ploiesti (RO) |
| 18. Lower Mures - Szeged (RO, H) | 44. Upper Siret (UA) |
| 19. Palic & Ludas Lakes (YU) | 45. Middle Siret - Bistrica & Tratus (RO) |
| 20. Upper Banat (YU) | 46. Upper Prut (UA) |
| 21. Vrbas - DTD Canal (YU) | 47. Middle Prut at Iasi (RO) |
| 22. Middle Banat - Bega & Birzava (RO, YU) | 48. Lower Prut (RO, MD) |
| 23. Upper Sava (SLO, HR) | 49. Yalpugh (MD) |
| 24. Sutila (SLO, HR) | 50. Lower Danube - Siret & Prut (RO, MD, UA) |
| 25. Kupa (SLO, HR) | 51. Ukrainian Delta & Liman Lakes (UA) |
| 26. Middle Sava - Kupa (HR) | |

Priority Wetlands for Restoration

- | | |
|---|------------------------------------|
| 1. Ingolstadt Floodplain (D) | 11. Danube Islands (RO, BG) |
| 2. Mouth of the Isar (D) | 12. Baka Greaca/Tulutan (RO, BG) |
| 3. Dräsing Forest (A) | 13. Calanasi Floodplain (RO) |
| 4. Hadanin Floodplain (CZ) | 14. Lower Prut (MD, RO) |
| 5. Gemenc - Béda - Karapancsa (H) | 15. Liman Lakes (UK, MD) |
| 6. Mouth of the Drina River (BIH, YU) & Bosut Forest (YU) | 16. Polder Pardina (RO) |
| 7. Floodplain next to Matra Palje (HR) | 17. Ukrainian Danube Delta (UA) |
| 8. Lower Badrag (H, S, K) | 18. Kupa Floodplain (HR) |
| 9. Lower Tisa (YU) | 19. Mouth of the Vrbas River (BIH) |
| 10. Baka Pateiu (RO, BG) | 20. Obedska Bara (YU) |
| | 21. Palic and Ludas Lakes (YU) |

* added on Transboundary Analysis Workshop

Danube Pollution Reduction Programme



United Nations Development Programme
Global Environmental Facility
ICPDR - Programme Coordination Unit
1400 Vienna, P.O. Box 500, Austria



Produced by ZINKE ENVIRONMENT CONSULTING
for Central and Eastern Europe, Vienna, 1999
(Cartography by U. SCHWARZ)