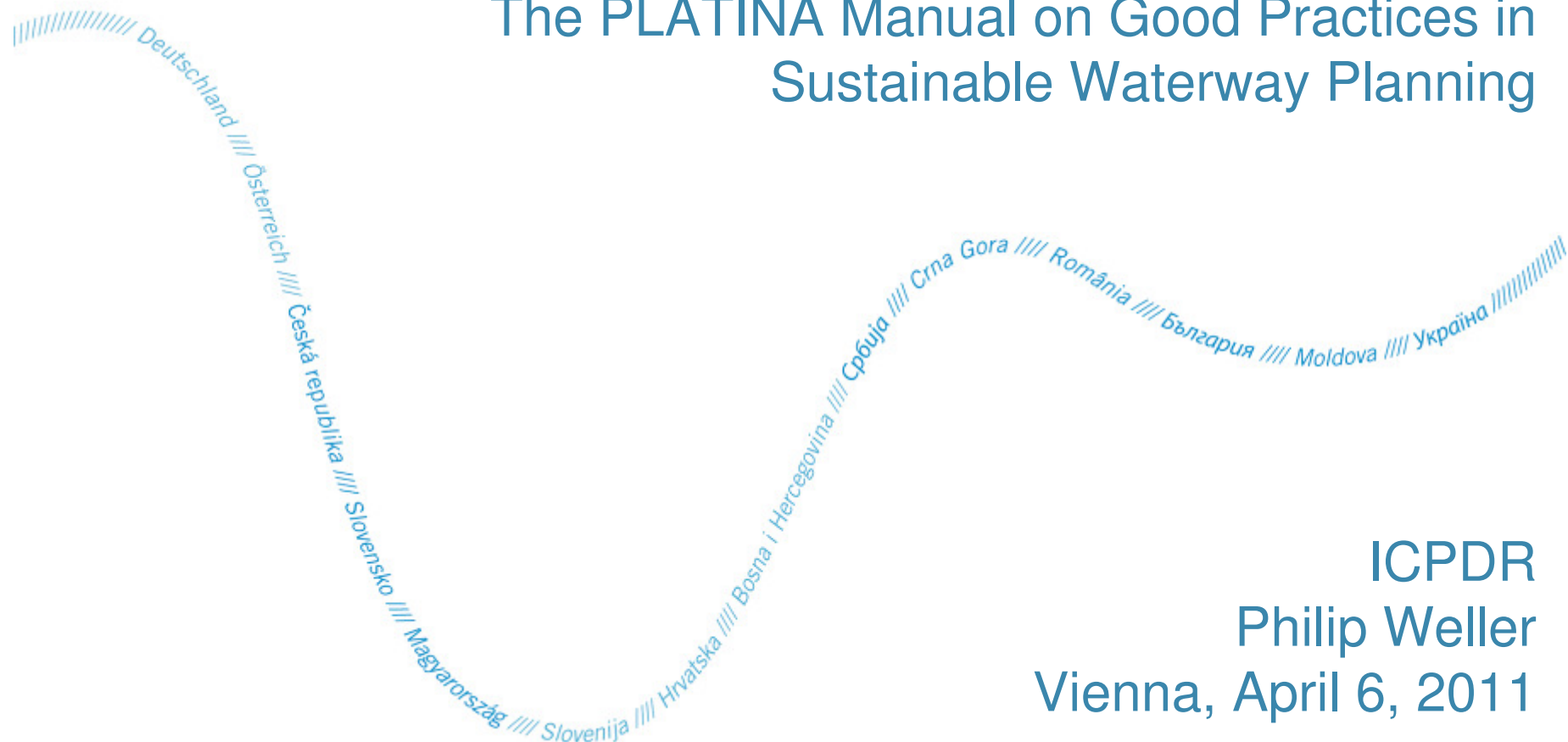

Joint Statement Meeting



The PLATINA Manual on Good Practices in Sustainable Waterway Planning



ICPDR
Philip Weller
Vienna, April 6, 2011



Danube River Protection Convention

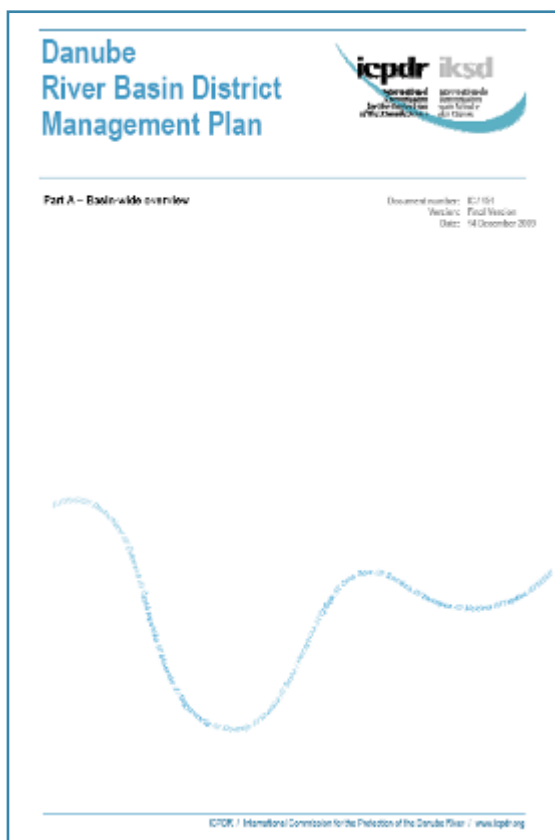


29 June 1994
Sofia - Bulgaria

- Protection of water / ecological resources
- Sustainable use of water in Danube River Basin
- Reduce inputs of nutrients and hazardous substances

**ICPDR coordinates implementation of
EU Water Framework Directive**

Danube River Basin Management Plan - 2009



Reflects

- Water status of the DRB waters
- Significant Water Management Issues

Includes

- Joint Programme of Measures
- Evaluation on measure implementation

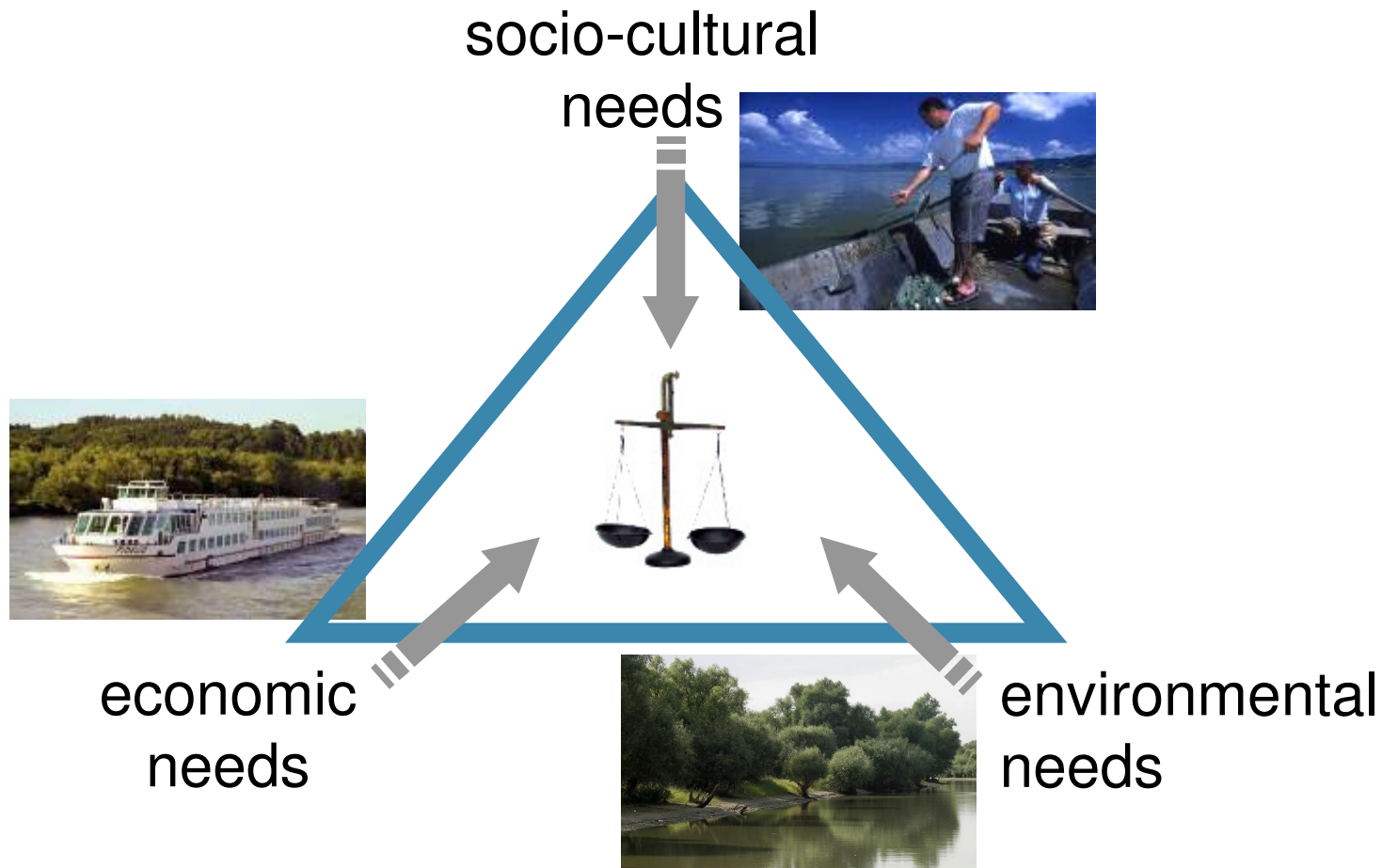
Enables

- Conclusions on investment & funding
- Potential link to Danube Strategy

Growing Need to Balance out Interests

icpdr iksd

International
Commission
for the Protection
of the Danube River
Internationale
Kommission
zur Schutz
der Donau



Joint Statement on Navigation

icpdr iksd

International
Commission
for the Protection
of the Danube River

Internationale
Kommission
zum Schutz
der Donau

icpdr iksd

International
Commission
for the Protection
of the Danube River

Internationale
Kommission
zum Schutz
der Donau



SAVA RIVER BASIN COMMISSION



INTERNATIONAL SAVA RIVER BASIN COMMISSION



icpdr iksd

International
Commission
for the Protection
of the Danube River

Internationale
Kommission
zum Schutz
der Donau

Development of Inland Navigation and Environmental Protection in the Danube River Basin

Joint Statement on Guiding Principles

Inland navigation can contribute to making transport more environmentally sustainable, particularly where it substitutes for road transport. It can, however, also have significant influence on river ecosystems, jeopardizing the goals of the EU Water Framework Directive, which aims for the "good ecological status" of all waters by 2015. Recognising this potential conflict in a number of new waterway projects along the Danube and the Sava river, the International Commission for the Protection of the Danube River (ICPDR) has linked up with the Danube Navigation Commission, and the International Sava River Basin Commission to conduct in 2007 an intense, cross-sectoral discussion process. As a result of 3 interdisciplinary workshops, a "Joint Statement on Guiding Principles on the Development of Inland Navigation and Environmental Protection in the Danube River Basin" was agreed. The final document was adopted in December 2007/January 2008 by the ICPDR, the Danube Commission and by the International Sava River Basin Commission. The "Joint Statement" is a guiding document for the maintenance of existing waterways and the development of future waterway infrastructure. It is perceived as a milestone that leads to the integration of ecology into waterway development.

// Deutschland // Österreich // Česká republika // Slovensko // Magyarország // Slovenija // Hrvatska // Bosna i Hercegovina // Srbija // Crna Gora // Romėnia // Belgien // Moldone // Ungarn //

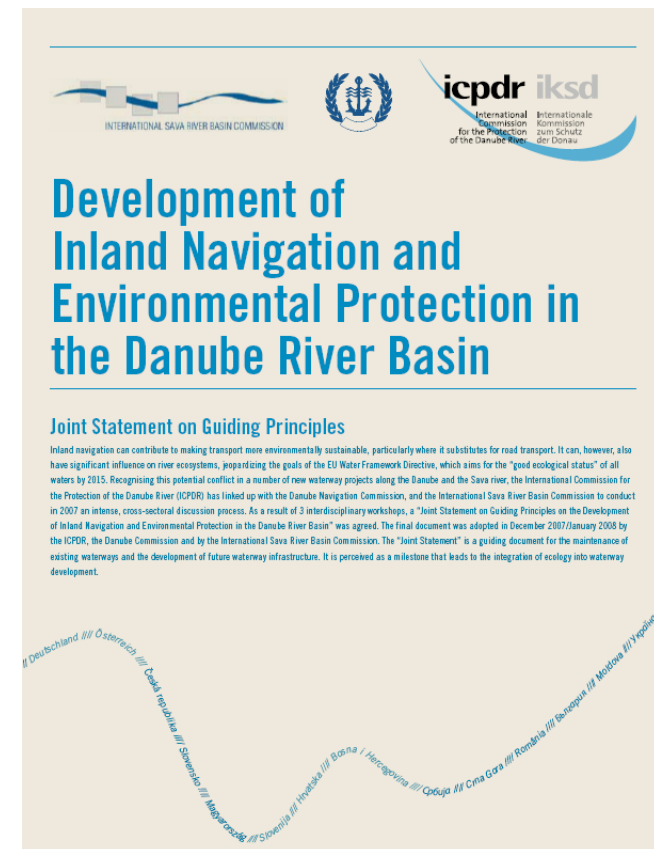
JS: Key Principles

icpdr iksd

International
Commission
for the Protection
of the Danube River

Internationale
Kommission
zum Schutz
der Donau

- **Integrated planning** process
- **Minimize impacts** of engineering
- **Apply EIAs** with public input
- **Define goals** for Inland Waterway Transport **and** ecological integrity
- Use **Best Practice examples**



EU Platina Project



Deliverable No.	Task	Description	Implementation	
			Partner	Due Month
D 5.1	5.3.1	Integrative study on Danube's hydro-morphological alterations	BOKU, ICPDR	Sept 2009
D 5.8	5.3.2	Good Practice Manual on Sustainable Waterway Planning	ICPDR, VIA, BOKU, INE	Dec 2009
D 5.10	5.3.3	Content for training and dissemination workshops on IWT planning	ICPDR, VIA	May 2011
D 5.12	5.3.3	Result of 3-4 training workshops	ICPDR, VIA, INE	October 2011

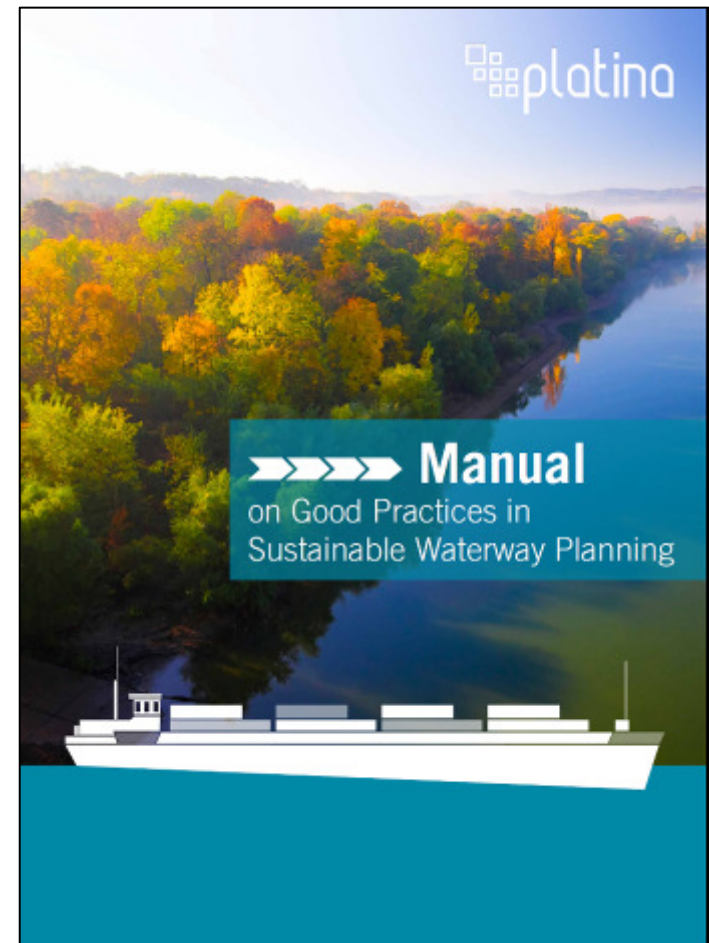


Best Practice Manual is finalised

Platina Manual: Objectives



- Illustrates Joint Statement with **principles & criteria**
- New **legal framework** conditions for river management
- **New approaches** in integrated planning
- General **practical guidance** for integrated planning
- **Examples** for ecology-oriented waterway & river bed engineering



Content



- Part A** Introduction & Background
- Part B** Model for an Integrated Planning Process
- Part C** Frameworks for Practical Application



Part B: Main Guidance

icpdr iksd

International
Commission
for the Protection
of the Danube River

Internationale
Kommission
zur Schutz
der Donau



5 Planning Stages...

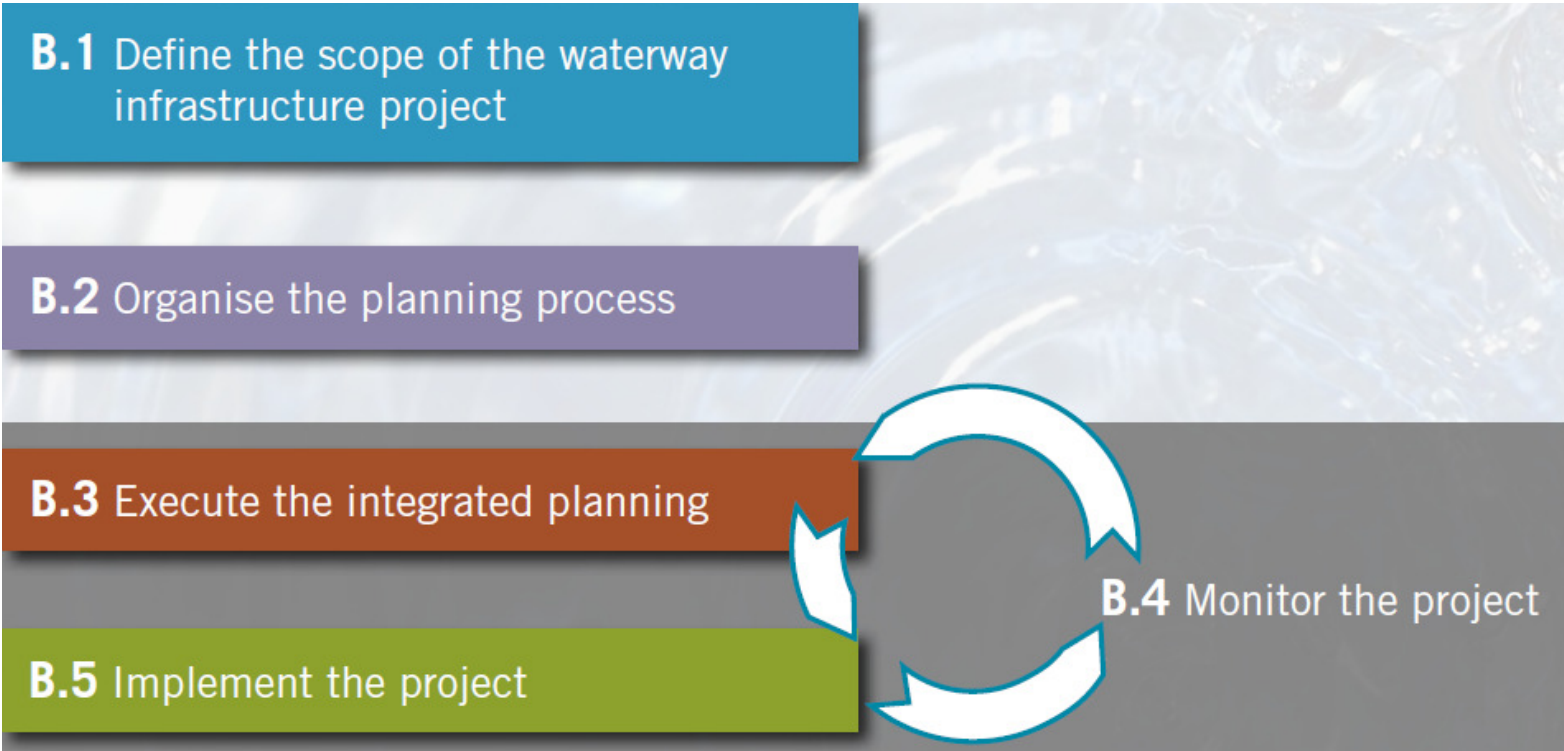
B.1 Define the scope of the waterway infrastructure project

B.2 Organise the planning process

B.3 Execute the integrated planning

B.5 Implement the project

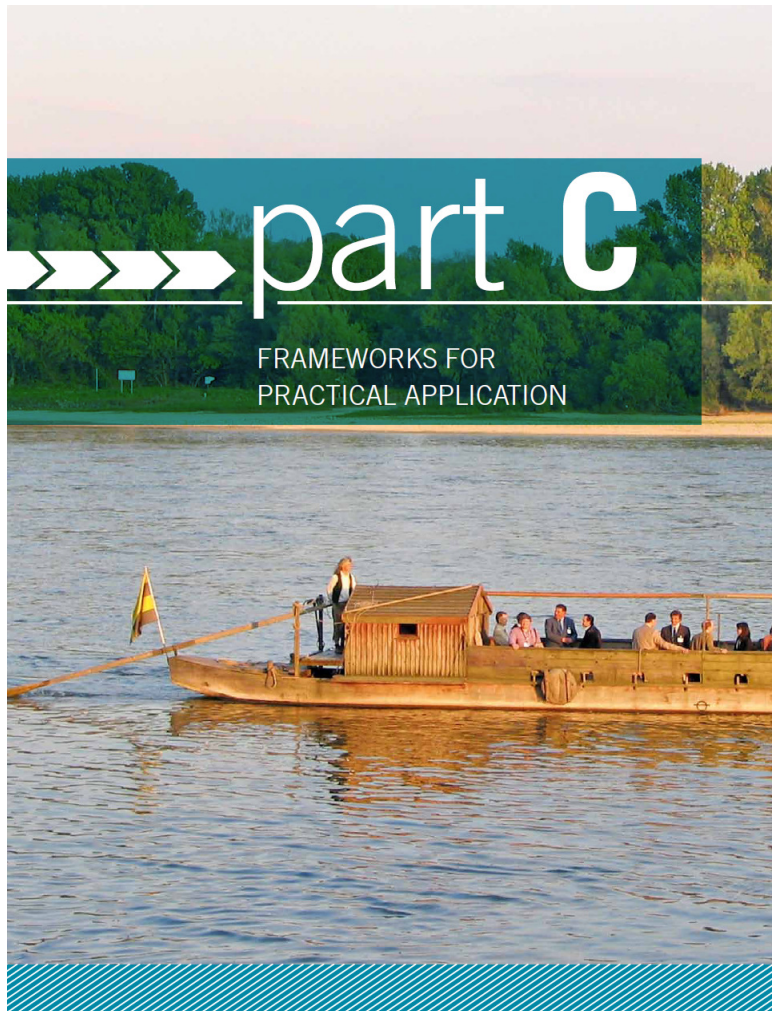
B.4 Monitor the project



Part B: Execute Planning



Part C: Frameworks for Practical Application



- C.1 Basics on river ecology and legal framework
- C.2 References for integrated planning
- C.3 Good practice examples

Showcase Studies

Down-sized groynes



Re-connected side-arms



Restored river banks

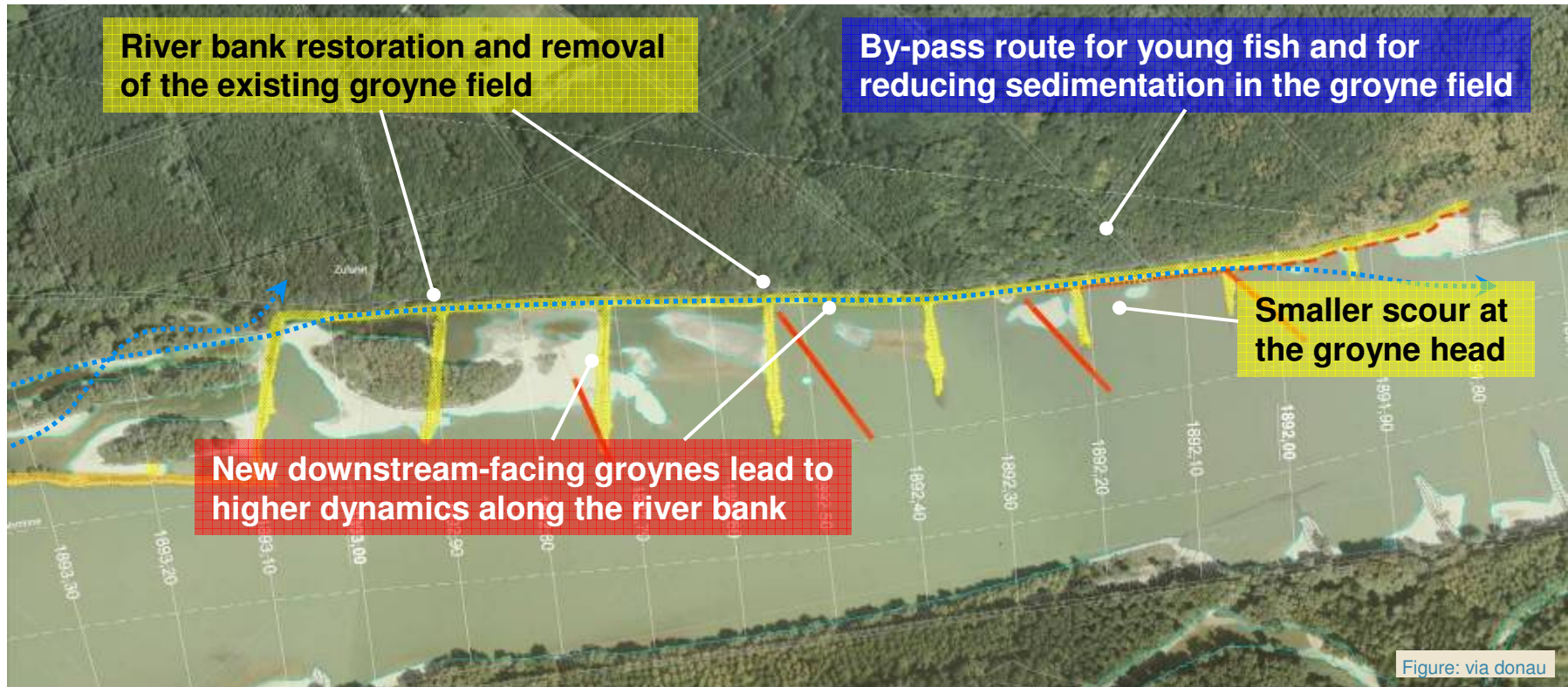


Groyne reconstruction Witzelsdorf, Austria

icpdr iksd

International
Commission
for the Protection
of the Danube River

Internationale
Kommission
zur Schutz
der Donau



— Removal of old groynes and river bank restoration

— Construction of new groynes

Conclusions



- Major IWT infrastructure projects under development
- Environmental legislation in place has to be respected
- Balancing IWT & environmental objectives is **key**
- **PLATINA Manual** is useful, applied tool



Ministerial Meeting February 16, 2010

icpdr iksd

International
Commission
for the Protection
of the Danube River

Internationale
Kommission
zur Schutz
der Donau



ICPDR MINISTERIAL MEETING
**DANUBE BASIN:
SHARED WATERS -
JOINT RESPONSIBILITIES**
Vienna, 16 February 2010

icpdr iksd

International
Commission
for the Protection
of the Danube River

Internationale
Kommission
zur Schutz
der Donau

Thank you!

icpdr iksd

International
Commission
for the Protection
of the Danube River

Internationale
Kommission
zur Schutz
der Donau

The screenshot shows the ICPDR website interface. On the left, there is a navigation menu with sections for 'Danube Basin' (River Basin, Countries, Black Sea), 'Issue' (Ecosystems, Water Quality, Water Pollution, Groundwater, Floods & Droughts, Dams & Structures, River Basin Management), 'Sectors' (Human Impacts, Municipalities, Industry, Agriculture, Navigation, Nature Protection), and 'ICPDR' (About Us, Projects & Programmes, Publications, Meetings & Events, The Convention). The main content area features a header with the ICPDR logo and a title 'Working for the Danube River Basin and Its People'. Below the header are three images: a group of people in yellow shirts, a satellite map of the Danube basin, and a child painting. A 'Welcome to ICPDR website!' message is followed by a portrait of Mr. Mykola MELENEVSKIY, ICPDR President 2011. Three news articles are displayed: 'THE UKRAINIAN PRESIDENCY OF THE ICPDR', 'WORLD WETLANDS DAY 2011', and 'SUSTAINABLE WATERWAY PLANNING MANUAL PUBLISHED'. Each article includes a brief summary and a 'MORE' link.

Further information: www.icpdr.org

From Black Forest to Black Sea

