

WATERBORNE TRANSPORT DEVELOPMENT AGENCY

A large cargo barge is being pushed or pulled by a tugboat on a wide river. The barge is loaded with various goods and is moving towards the right. The river is wide and calm, with a forested bank visible in the background. The sky is overcast.

Vladimír Novák, director
Wien, ICPDR April 5th-6th 2011

RESPONSIBILITY IN THE FIELD OF WATERBORNE TRANSPORT IN THE SLOVAK REPUBLIC BEFORE 2011

1. Ministry of Transport, Construction and Regional Development of the Slovak republic
 - a) determines the concept of development of inland navigation, ports and waterways (and in cooperation with the Ministry of Environment of the Slovak republic is responsible for its implementation in accordance with intentions of national transport policy)
 - b) represents the Slovak Republic in matters of inland navigation in relations to international organizations cooperating in the field of inland navigation
 - c) is responsible for international cooperation in the transport of dangerous goods

N1: Creates conditions for the implementation and development of water transport on the waterways, but

N2: Maintenance of waterways and construction of new waterways was the responsibility of the Ministry of Environment (and its predecessors)

A long barge with a tugboat pushing it on a wide river. The background shows a hazy landscape with hills.

RESPONSIBILITY IN THE FIELD OF WATERBORNE TRANSPORT IN THE SLOVAK REPUBLIC BEFORE 2011

1.1 State Navigation Administration (Štátna plavebná správa)

performs state expert supervision of

1. management and maintenance of waterways and ports,
2. operation of vessels on the waterways and ports,
3. qualifications of member of the vessel crew and of operational staff (operators) of locks
4. ability of vessels,
5. observance of regulations for safety of inland navigation (CEVNI – European Code for Inland Waterways),
by (shipping) inspectors

RESPONSIBILITY IN THE FIELD OF WATERBORNE TRANSPORT IN THE SLOVAK REPUBLIC BEFORE 2011

1.2 Public Ports, a.s. (Verejné prístavy, a.s.)

company was established, inter alia, to:

- a) prepare and realize construction of public ports (including conceptions processing of their development);
- b) ensure the operation, registration, maintenance and repair of buildings and facilities in the public port areas (territorial districts of ports);
- c) rent the property in public port areas;
- d) charge for use of public ports;
- e) create conditions for the development of combined transport;

An aerial photograph of a wide river. In the foreground, a large white tugboat is pushing a long, dark barge. Further down the river, another barge is visible. The background shows a hazy, forested hillside. The text is overlaid on this image.

RESPONSIBILITY IN THE FIELD OF WATERBORNE TRANSPORT IN THE SLOVAK REPUBLIC BEFORE 2011

2. Ministry of Environment of the Slovak republic

indirect responsibility for the construction of water ways (through construction of water works) as resulting from so-called Act on the competencies of government bodies, the water Act, Concept of Water management policy of the Slovak republic

NOTE:

In the past, Water Act determined directly responsibility of the environment sector (and its predecessors) for the construction of waterways

An aerial photograph of a wide river, likely the Danube, with a large cargo ship and a smaller boat. The background shows a hazy, forested hillside. The text is overlaid on this image.

RESPONSIBILITY IN THE FIELD OF WATERBORNE TRANSPORT IN THE SLOVAK REPUBLIC BEFORE 2011

2.1 Slovak Water management Enterprise, š.p. (Slovenský vodohospodársky podnik, š.p.)

responsibility for maintenance and operation of exist water ways and for demarcation of the fairway for reimbursement (charge)
(under relevant provisions of the water Act)

NOTE:

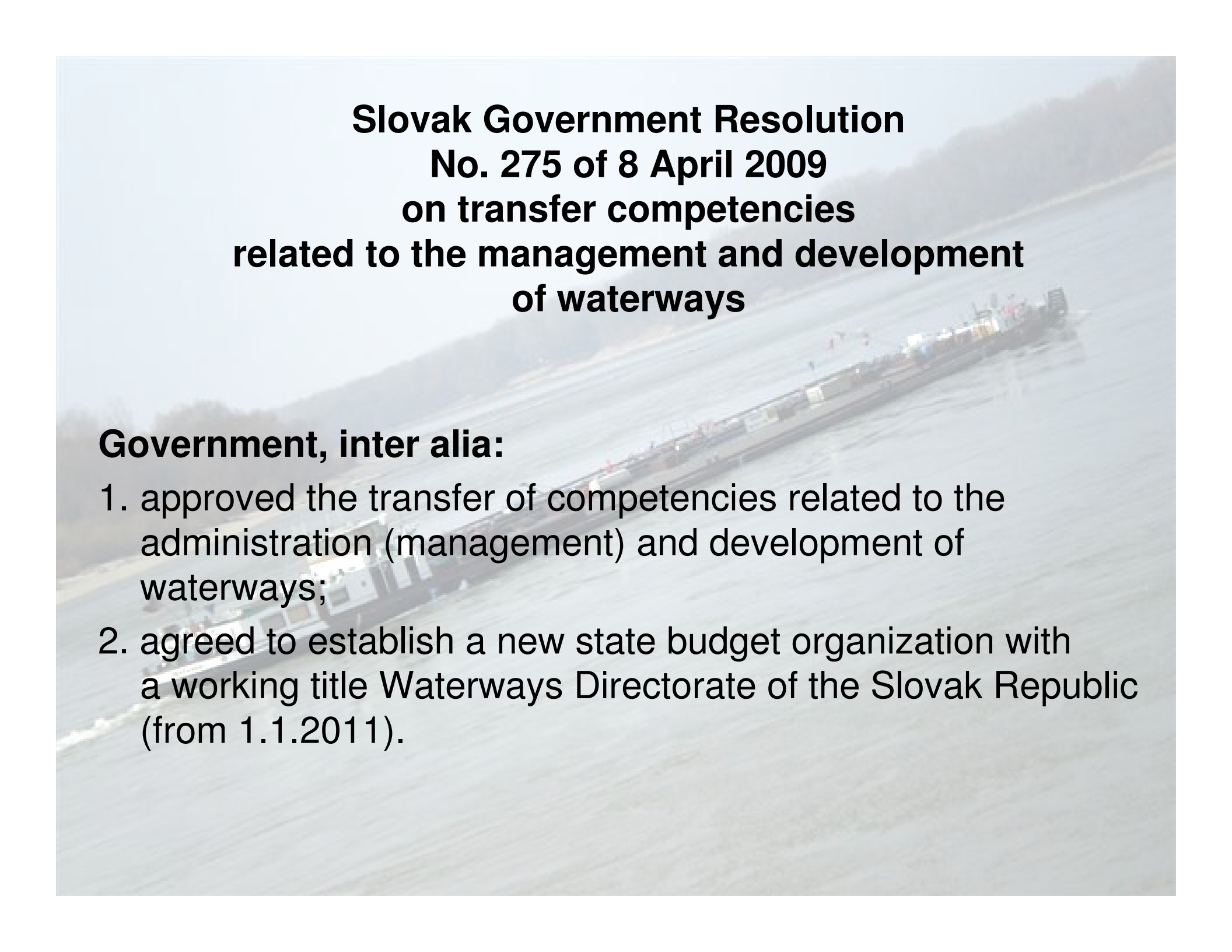
Absence of direct responsibility of the transport sector and of the environment sector for the construction of water ways

An aerial photograph of a wide river, likely the Danube, with a large barge being pushed or pulled by a tugboat. The river flows through a valley with hills in the background. The text is overlaid on this image.

RESPONSIBILITY IN THE FIELD OF WATERBORNE TRANSPORT IN THE SLOVAK REPUBLIC AFTER THE YEAR 2011

Establishment of the Waterborne Transport Development Agency

- a) in accordance with the Slovak Government Resolution No. 275 of 8 April 2009 on transfer competencies related to the management and development of waterways
- b) in accordance with the Slovak Government Resolution No. 642 of 16 September 2009 on the General Program on the implementation of NAIADES in the Slovak republic
- c) according to the Act No. 556/2010 Z.z, amending the Act No. 338/2000 Z.z. on inland navigation

A large cargo ship is seen from an elevated perspective, moving along a wide river. The ship is dark-colored with a white superstructure and is carrying a long line of colorful cargo containers. The river is calm, and the background shows a hazy, forested hillside under a light sky.

**Slovak Government Resolution
No. 275 of 8 April 2009
on transfer competencies
related to the management and development
of waterways**

Government, inter alia:

1. approved the transfer of competencies related to the administration (management) and development of waterways;
2. agreed to establish a new state budget organization with a working title Waterways Directorate of the Slovak Republic (from 1.1.2011).



**Slovak Government Resolution
No. 642 of 16 September 2009
on the General Program of Implementation of NAIADES
in the Slovak republic**

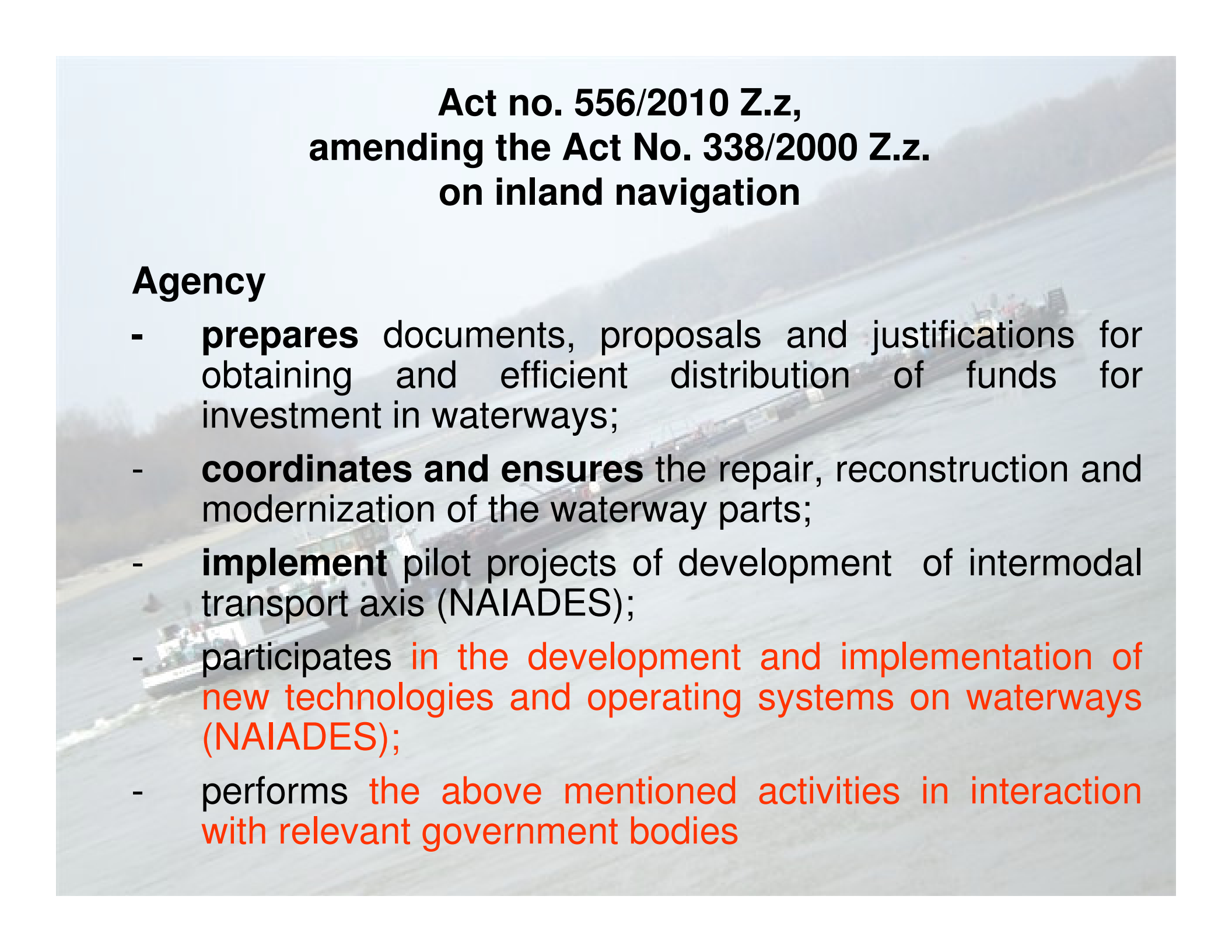
Government, inter alia:

1. approved the General Program of Implementation of NAIADES in the Slovak republic;
2. imposed the minister of the Transport, Construction and Regional Development, to apply for funds to fulfil the needs of material and financial schedule for the performing of tasks of the General Programme of implementation NAIADES in the Slovak republic when preparing the state budget for the years 2011 to 2013 funds to meet

**Act no. 556/2010 Z.z,
amending the Act No. 338/2000 Z.z.
on inland navigation**

The Agency provides:

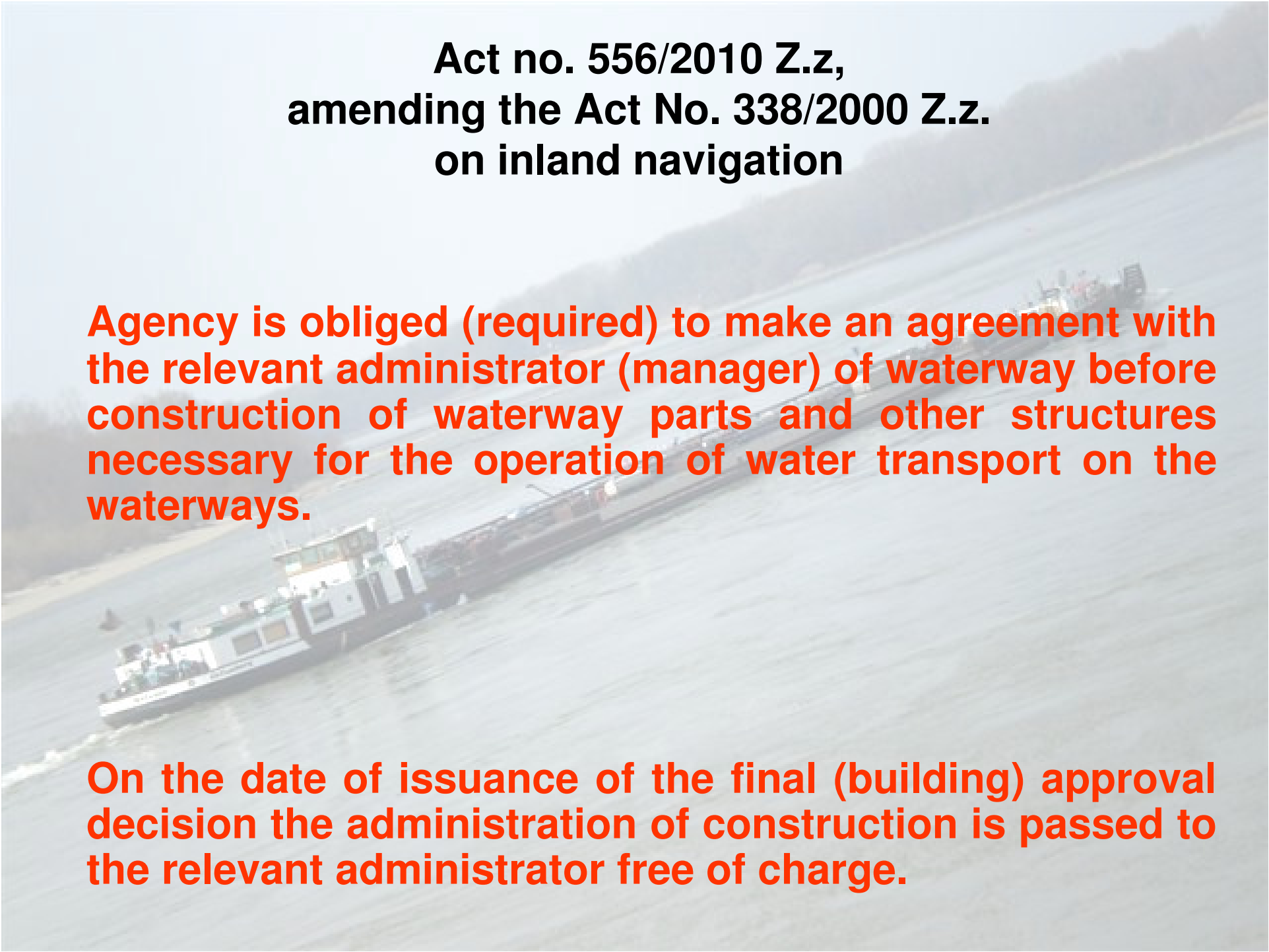
- 1. development and modernization of waterways in accordance with approved Transport Policy;**
 2. preparation and implementation of construction and reconstruction of parts of waterways and other structures necessary for operation of water transport on the waterways for its management and maintenance, and procurement of additional property necessary for operation and maintenance of waterways;
 3. supporting documents for processing of concepts in the field of monitored waterways and perspective monitored waterways according to a mutual agreement with the relevant administrator (manager) of the watercourse;
 - 4. promoting of Inland Navigation**
- P: coordinator dealing with individual parts of the General program for the Development of the Inland Waterway Transport in the Slovak republic (for example NAIADES / PLATINA)**

The background of the slide is a photograph of a wide river. In the distance, a large bridge spans across the water. A boat is visible on the river in the lower-left quadrant. The sky is overcast and the overall scene is somewhat hazy.

Act no. 556/2010 Z.z, amending the Act No. 338/2000 Z.z. on inland navigation

Agency

- **prepares** documents, proposals and justifications for obtaining and efficient distribution of funds for investment in waterways;
- **coordinates and ensures** the repair, reconstruction and modernization of the waterway parts;
- **implement** pilot projects of development of intermodal transport axis (NAIADES);
- participates **in the development and implementation of new technologies and operating systems on waterways (NAIADES);**
- performs **the above mentioned activities in interaction with relevant government bodies**

An aerial photograph of a wide river. In the foreground, a large white tugboat is pushing a long, dark barge. Further down the river, another tugboat is pushing a similar barge. The riverbanks are visible, with some trees and structures. The sky is overcast.

**Act no. 556/2010 Z.z,
amending the Act No. 338/2000 Z.z.
on inland navigation**

Agency is obliged (required) to make an agreement with the relevant administrator (manager) of waterway before construction of waterway parts and other structures necessary for the operation of water transport on the waterways.

On the date of issuance of the final (building) approval decision the administration of construction is passed to the relevant administrator free of charge.

WATERBORNE TRANSPORT DEVELOPMENT AGENCY LETTER OF ESTABLISHMENT

by the Minister of Transport, Construction and Regional Development No.155 of 31 December 2010 on issue (publication) of the Letter of Establishment of the Waterborne Transport Development Agency, which:

1. has been established for an indefinite period
2. in terms of material and financial definition of the property it has no property (without right to manage it)
3. is a state budgetary) organization linked to the budget of the Slovak Republic through the Ministry of Transport, Construction and Regional Development of the Slovak Republic

WATERBORNE TRANSPORT DEVELOPMENT AGENCY

General data

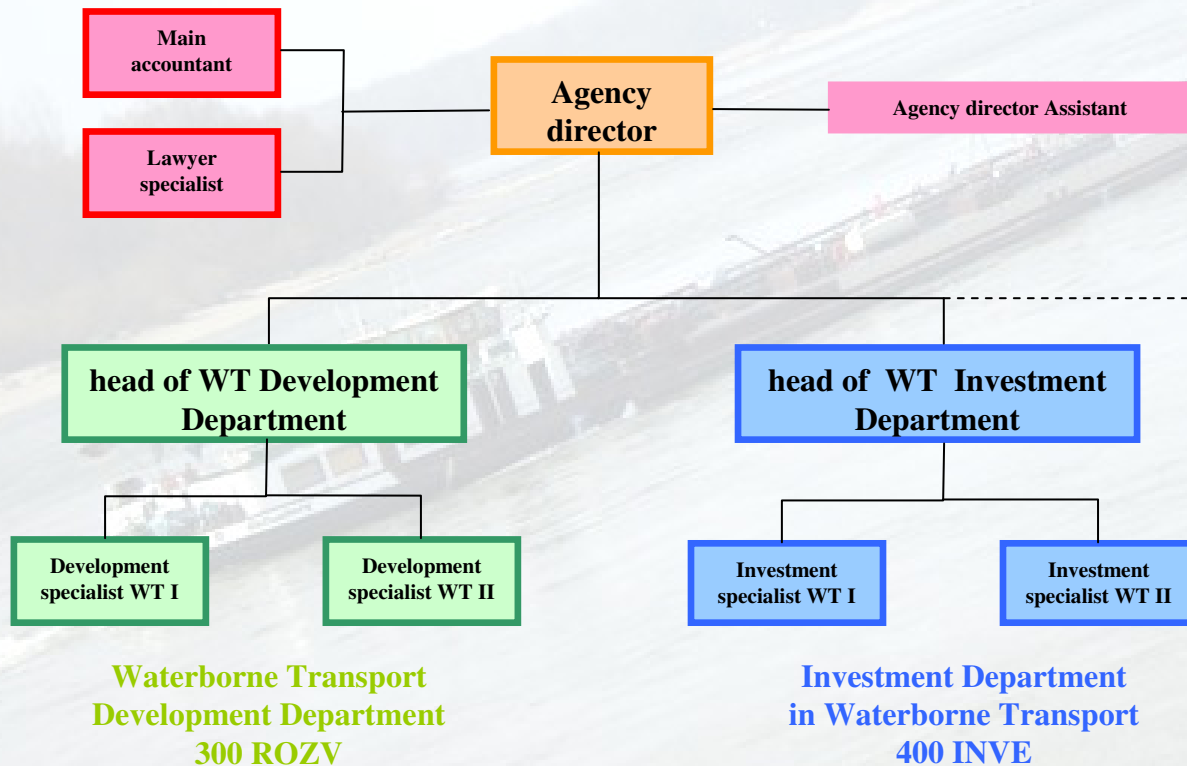
- established by decision of the Minister of Transport, Construction and Regional Development,
- Date of establishment: December 31st 2010
- Legal form: legal entity
- Type of legal entity: State Budgetary Organization
- Seat: Nám. slobody č. 6
P. O. BOX 9
810 05 Bratislava 15
- Number of employees: considered 10
actually 3

WATERBORNE TRANSPORT DEVELOPMENT AGENCY

ORGANIZATIONAL STRUCTURE (CHART)

OPERATION DEPARTMENT
200 PREV

OFFICE DIRECTOR
100 RIAD



OUTSOURCING

- fire protection,
- Work safety and health protection
- information and communication technologies,
- maintenance,
- Public procurement,
- accounting,
- tax advice
- etc.



**COMMUNICATION FROM THE COMMISSION
ON THE PROMOTION OF INLAND WATERWAY TRANSPORT
“NAIADES”**

**An Integrated European Action Programme
for Inland Waterway Transport
17.01.2006, Brussels**

1. MARKETS

- a) Attract new markets
- b) Encourage entrepreneurship (business)
- c) Improve administrative and regulatory framework

2. FLEET

- a) Improve logistics efficiency, environmental and safety performance of IWT

3. JOBS AND SKILLS

- a) Attract workforce
- b) Invest in human capital

An aerial photograph of a large cargo ship navigating a wide river. The ship is long and narrow, with a white hull and a dark superstructure. It is moving from the bottom left towards the top right of the frame. The water is a light greyish-blue, and the surrounding landscape is hazy and green. The text is overlaid on the top half of the image.

COMMUNICATION FROM THE COMMISSION ON THE PROMOTION OF INLAND WATERWAY TRANSPORT “NAIADES”

An Integrated European Action Programme for Inland Waterway Transport 17.01.2006, Brussels

4. IMAGE

a) Promote inland navigation as a successful partner in business

b) Set up and expand European IWT promotion and development network

c) Monitor trends and developments within the IWT market

5. INFRASTRUCTURE

a) Improve multi-modal network

b) Implement River Information Services

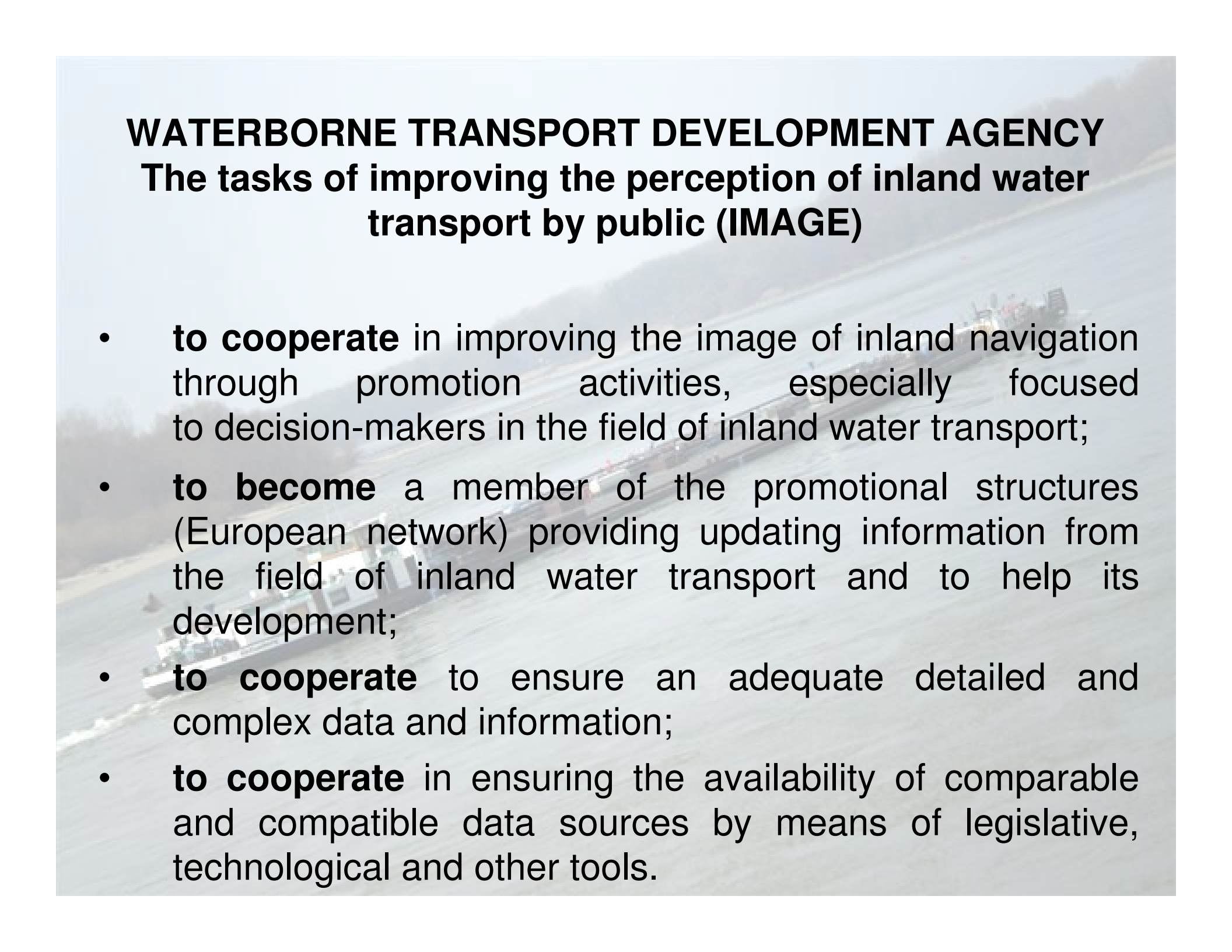


**WATERBORNE TRANSPORT DEVELOPMENT AGENCY
TASKS OF THE GENERAL PROGRAMME NAIADES
IMPLEMENTATION FOR 2011
IN THE SLOVAK REPUBLIC
(Concepts, infrastructure)**

1. Cooperation in the preparation of state aid and subsidies for the development of waterway
2. Concept of development of inland water transport of the Slovak republic - Update
3. Improving the parameters of the fairway of the Danube r.km 1797-1790
 - 2.1 Model Research – project
 - 2.2 Implementation
4. Reconstruction of the port berths and their equipment in the Port of Bratislava
5. Reconstruction of the port I berths and their equipment in the Port of Komárno

WATERBORNE TRANSPORT DEVELOPMENT AGENCY EDUCATION AND SKILLS OF IWT STAFF - TASKS (& JOB SKILLS)

- cooperate in the design of the state incentive program (which would, by its criteria and form of support, help to establish accredited workplaces to other basic, extension and practical trainings);
- to cooperate in developing model of legislative and financial support to ensure favourable conditions for the providing of education to do sailor profession;
- to cooperate elaboration of analysis of material and financial demands to ensure the necessary equipment and training centres for the staff of the field of inland water transport (sailor, captain, inland water transport operator, port operator,...).

An aerial photograph of a wide river with several large cargo barges and a tugboat. The barges are long and narrow, with various structures on top. The water is a light blue-grey color. The background shows a hazy, overcast sky and some distant land.

WATERBORNE TRANSPORT DEVELOPMENT AGENCY

The tasks of improving the perception of inland water transport by public (IMAGE)

- **to cooperate** in improving the image of inland navigation through promotion activities, especially focused to decision-makers in the field of inland water transport;
- **to become** a member of the promotional structures (European network) providing updating information from the field of inland water transport and to help its development;
- **to cooperate** to ensure an adequate detailed and complex data and information;
- **to cooperate** in ensuring the availability of comparable and compatible data sources by means of legislative, technological and other tools.

